



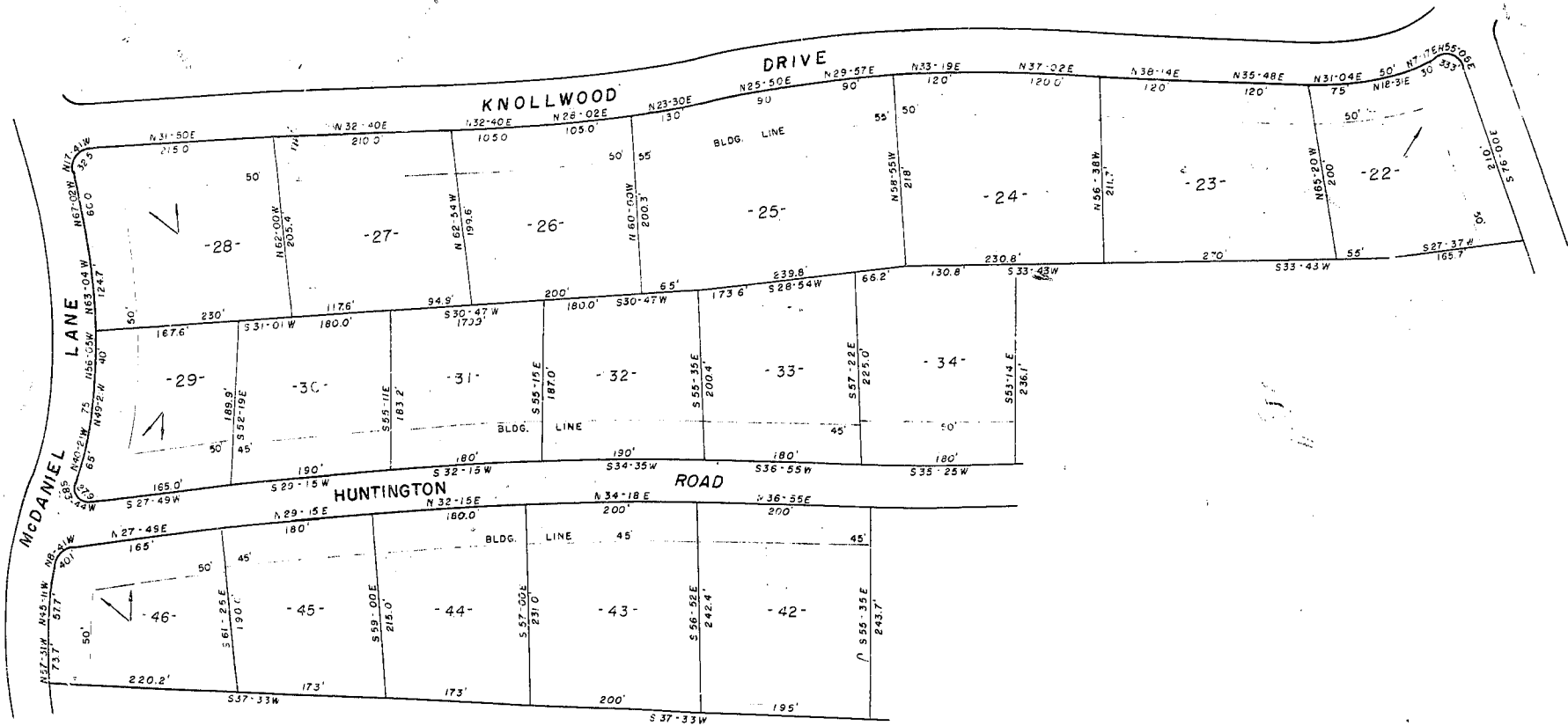
PLAT OF
KNOLLWOOD HEIGHTS
NEAR MAULDIN, S.C.

SCALE 1" = 100'

Oct. 1958

For Revised Plat, see bottom of this page.

NOTE -
THERE IS A 5' UTILITY & DRAINAGE
EASEMENT ALONG ALL SIDE & REAR LOT LINES.
DIRECTION LOT FACES



1958. New Plat of 17 lots in 1958. See 1958 Plat for details. Original Plat of 17 lots in 1958. See 1958 Plat for details.

GREENVILLE CO., S.C.

JUN 28 8 31 AM 1959

OLLIE TANKWORTH
R., M.C.

JAN 28 1959

19256

*150
20-152 for*